

Instruction For Option Manual

The mark★are basic parts for one garment.They are required to be selected.

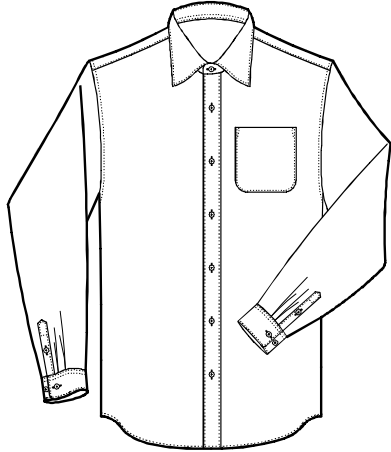
▲Means standard workmanship.

If you have no special requirement,garment will be made according to the standard workmanship.

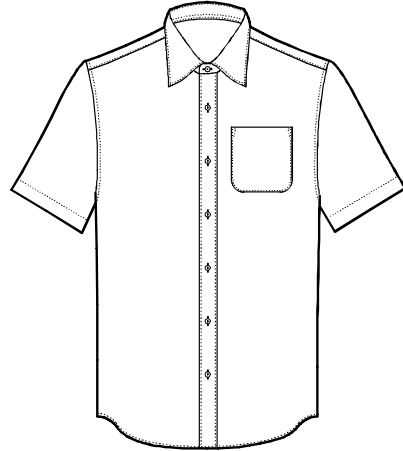
Besides standard workmanship,there is much other workmanship listed in the option manual.You could select any one you preferences.

Dress for success,dress for you!

★ Long sleeve&short sleeve

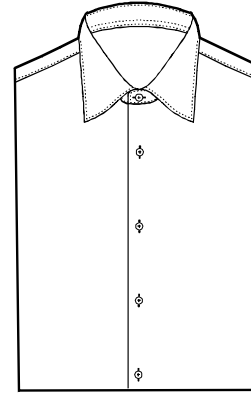


S-5000
▲ Long sleeve shirt

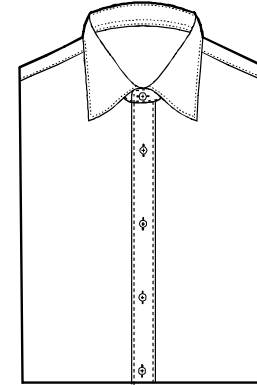


S-5001
Short sleeve shirt

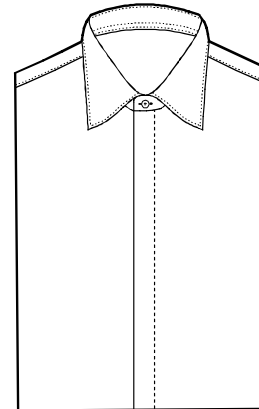
★ Front style



S-5100
Plain front

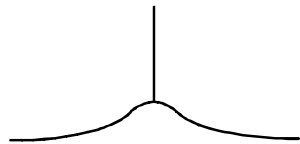
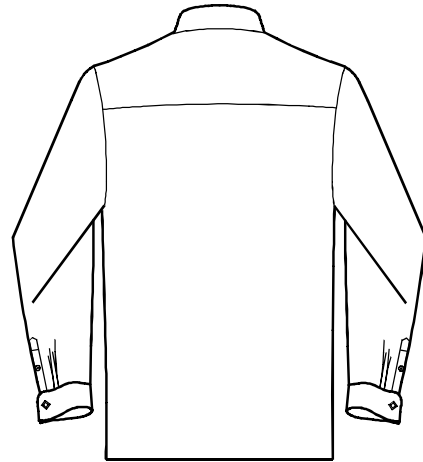
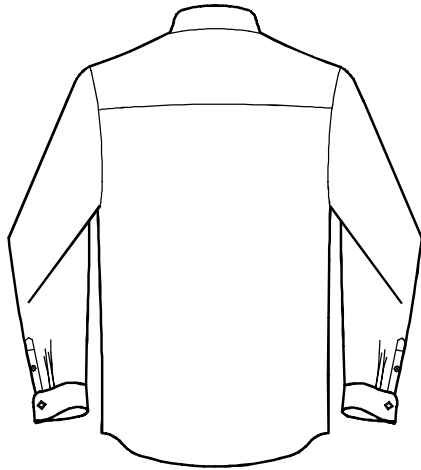


S-5101
▲ Placket front



S-5103
Hidden button front

★ Bottom style



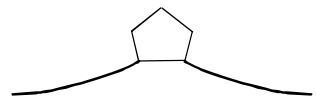
S-5120

▲ Normal rounded bottom



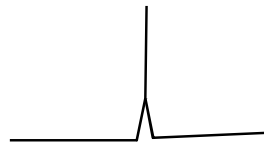
S-5130

Normal square bottom



S-5123

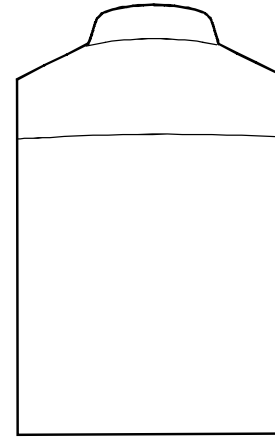
Rounded bottom
with pentagon gusset



S-5131

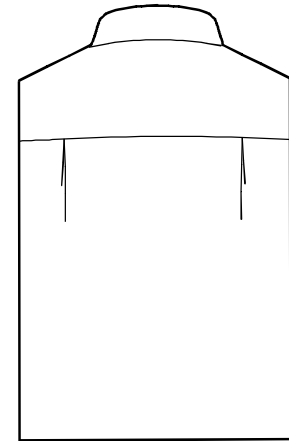
Straight side vents bottom

★ Back style



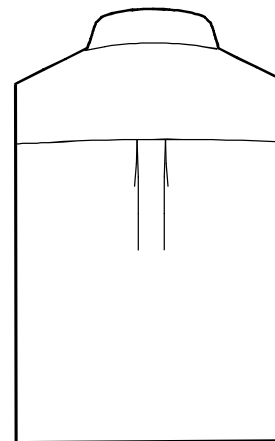
S-5140

Plain back



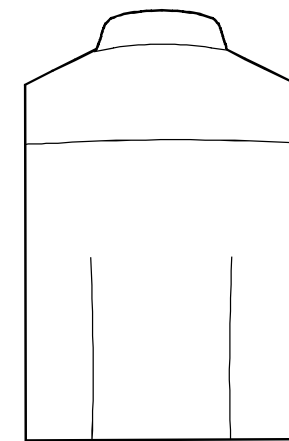
S-5141

▲ Side pleats



S-5143

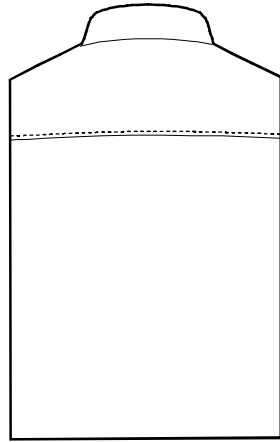
Box pleats



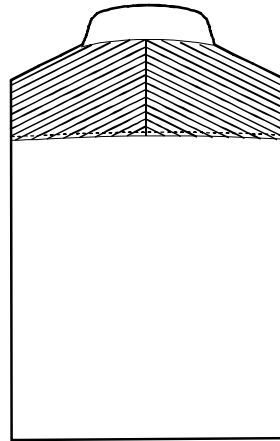
S-5144

Double darts

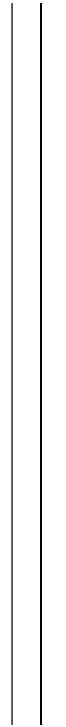
Yoke style



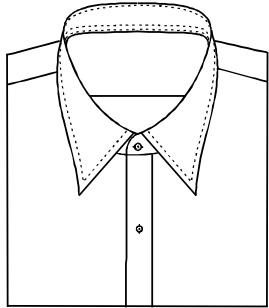
S-5170
▲ Normal yoke



S-5171
▲ Split yoke

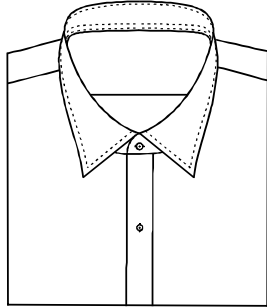


★ Collar style



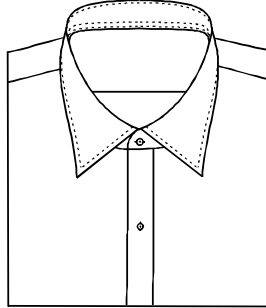
S-5201

▲ Long pointed collar



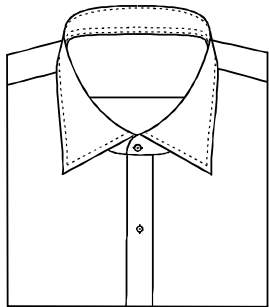
S-5202

Short pointed collar



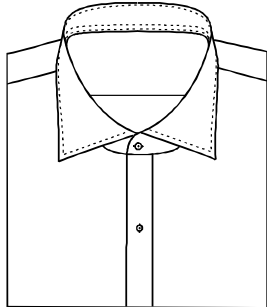
S-5203

Middle pointed collar



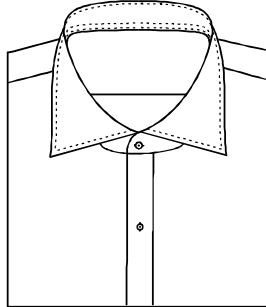
S-5210

Middle squared collar



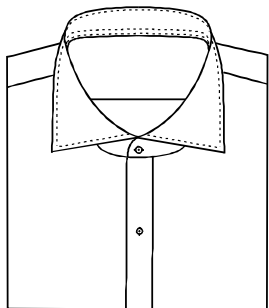
S-5211

Large squared collar



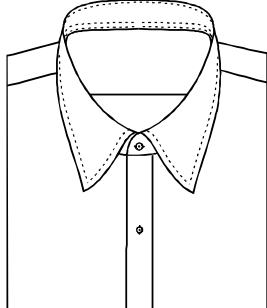
S-5220

Middle cut away collar



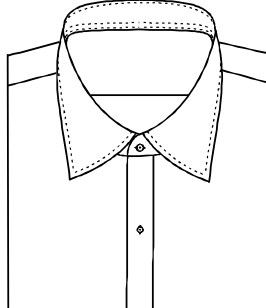
S-5221

Large cut away collar



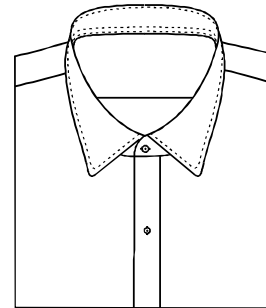
S-5230

Middle arch collar



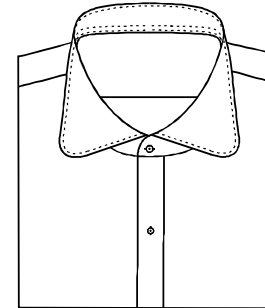
S-5231

Large arch collar



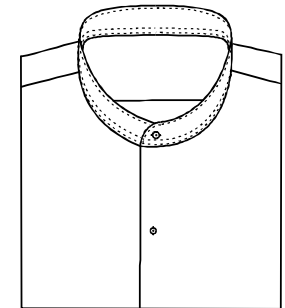
S-5240

Small rounded points collar



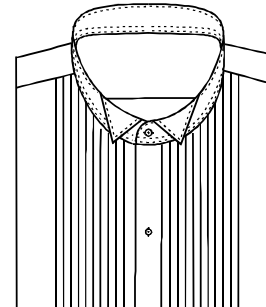
S-5241

Big rounded points collar



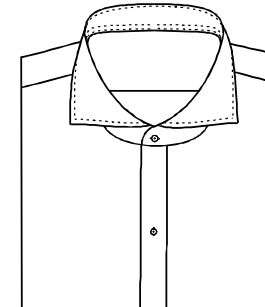
S-5250

Band collar



S-5260

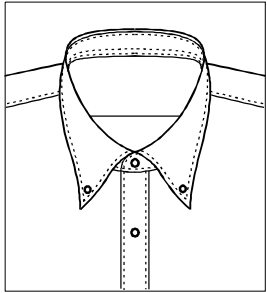
Tuxedo collar



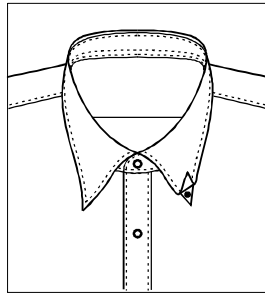
S-5L02

CUT collar

Collar Points

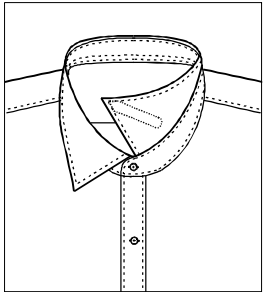


S-5290
Collar point
w/button

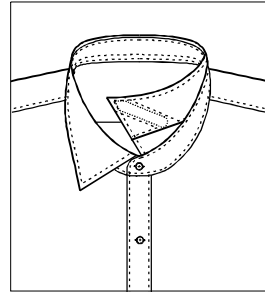


S-5291
Collar point
w/hidden button

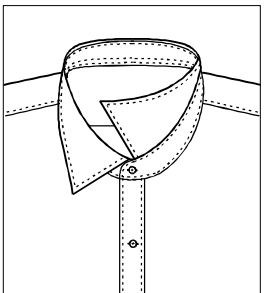
★ Collar stay



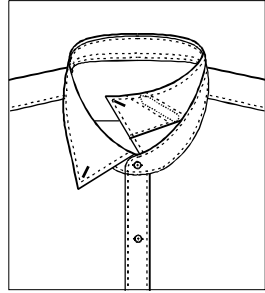
S-5280
Fixed collar stay



S-5281
▲ Movable collar stay

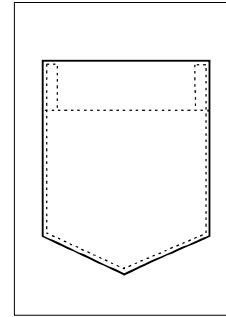


S-5282
No collar stay

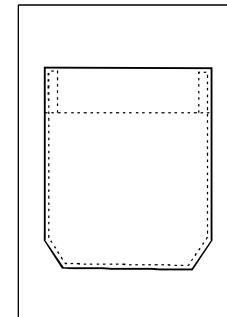


S-5283
Collar point w/button
Movable collar stay

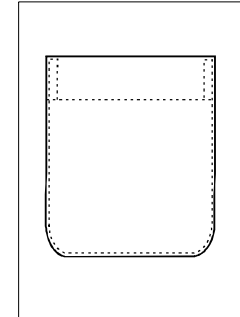
★ Pocket style



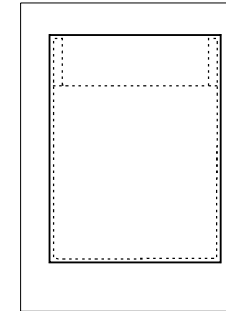
S-5300
Triangle pocket
Straight pleat



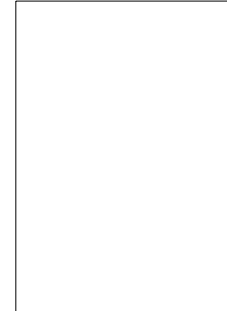
S-5312
Hexagon pocket
Straight pleat



S-5323
Rounded pocket
Straight pleat

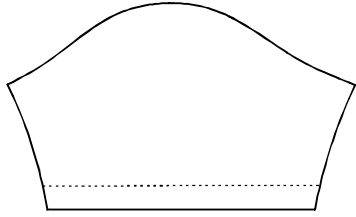


S-5340
Square pocket
straight pleat

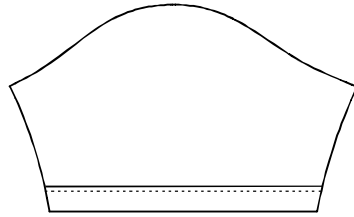


S-5360
▲ No pocket

★ Short sleeve style



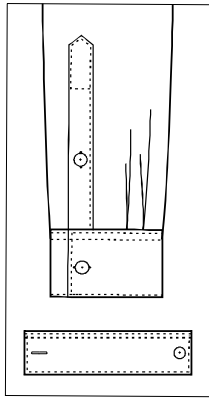
▲ S-54A0
Short sleeve Plain



S-54A1
Short sleeve Hem

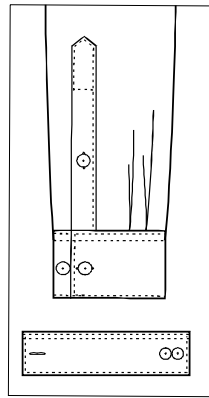


★ Cuff style



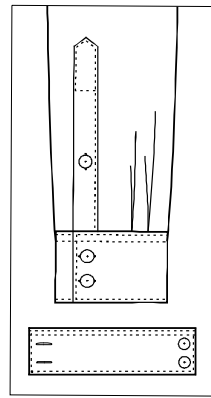
S-5400

Square cuff one button
one buttonhole



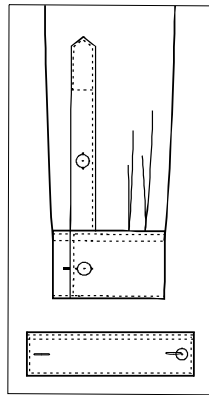
S-5401

Square cuff two buttons
one buttonhole



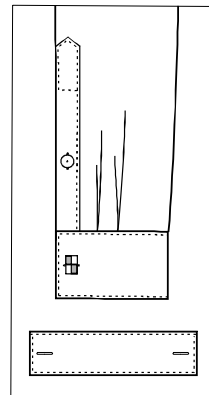
S-5402

Square cuff two buttons
two buttonholes



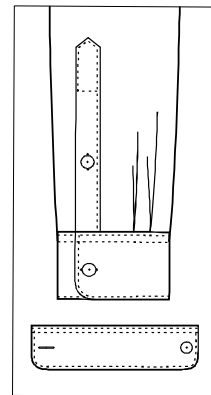
S-5404

Square cuff one button
two buttonholes



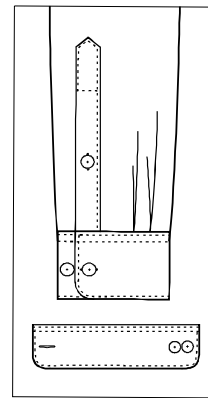
S-5406

Single French cuff
two buttonholes



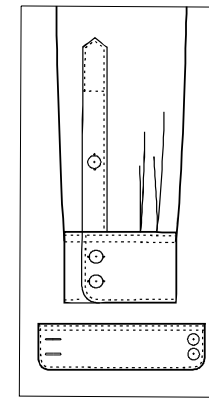
S-5410

▲ Rounded cuff one
button one buttonhole



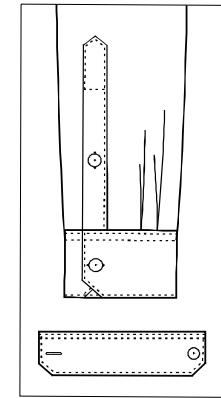
S-5411

Rounded cuff two
buttons one buttonhole



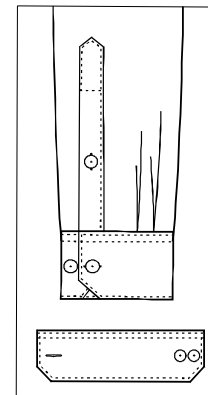
S-5412

Rounded cuff two
buttons two buttonholes



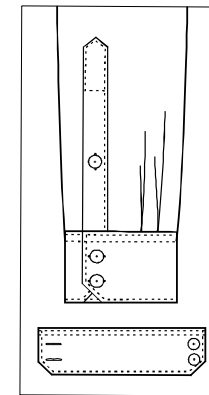
S-5430

Hexagon cuff one button
one buttonhole



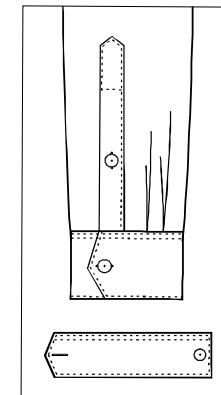
S-5431

Hexagon cuff two buttons
one buttonhole



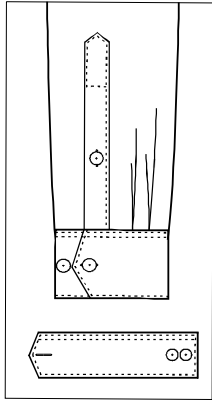
S-5432

Hexagon cuff two buttons
two buttonholes

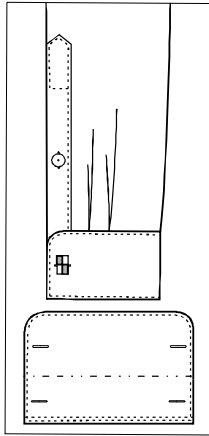


S-5440

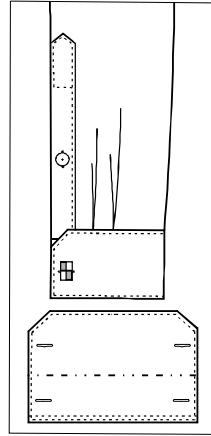
Pointed cuff one button
one buttonhole



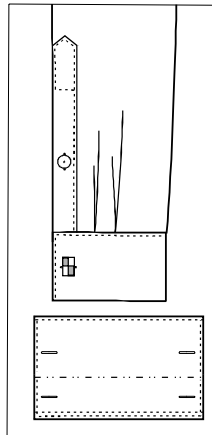
S-5441
Pointed cuff two buttons
one buttonhole



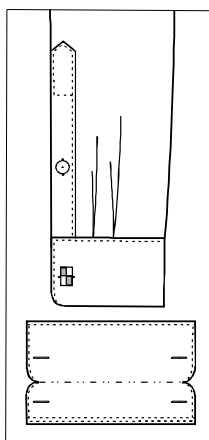
S-5451
Rounded French cuff
four buttonholes



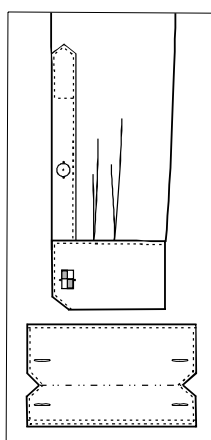
S-5452
Hexagon French cuff
four buttonholes



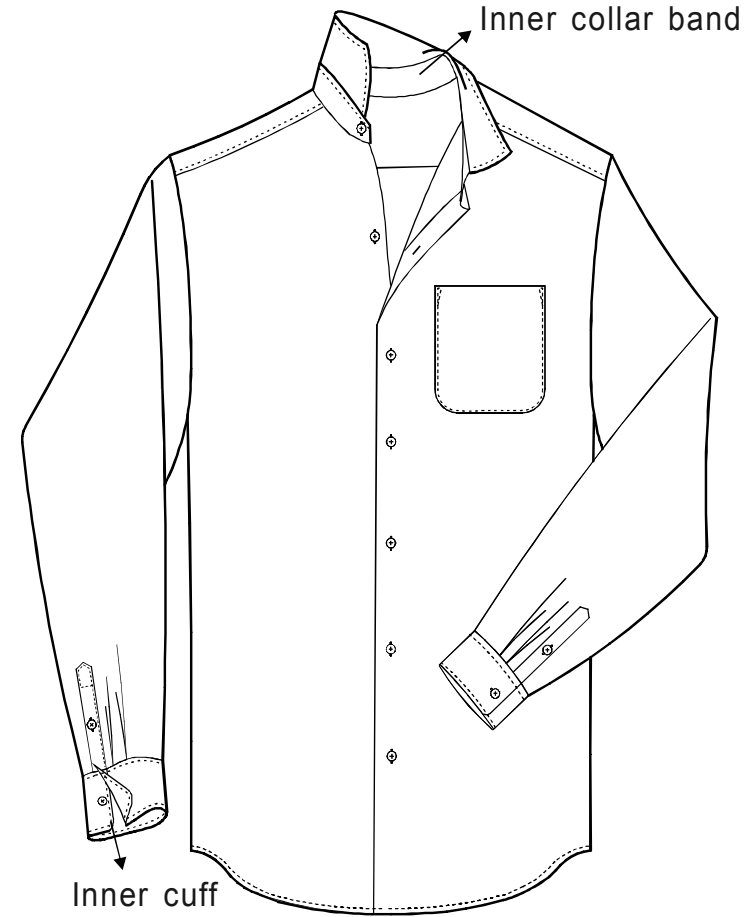
S-5455
Square French cuff
four buttonholes



S-5457
French cuff double
rounded four buttonholes

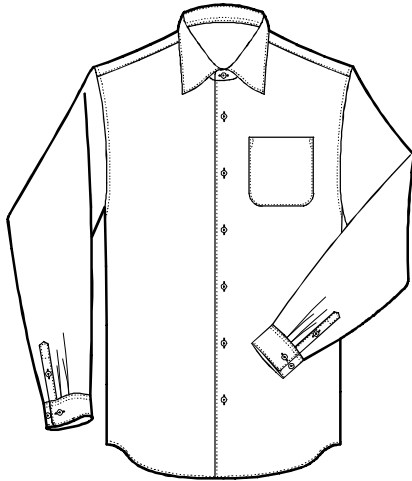


S-5459
French cuff double hexagon
four buttonholes



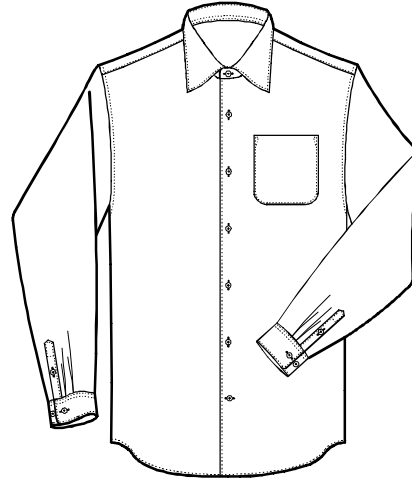
- S 5511 Collar/ cuff contrast fabric--Customer appointed fabric
- S 5514 Collar/ cuff contrast fabric--White
- S 5530 Inner collar band/inner cuff contrast fabric--customer appointed fabric

Front Button Style



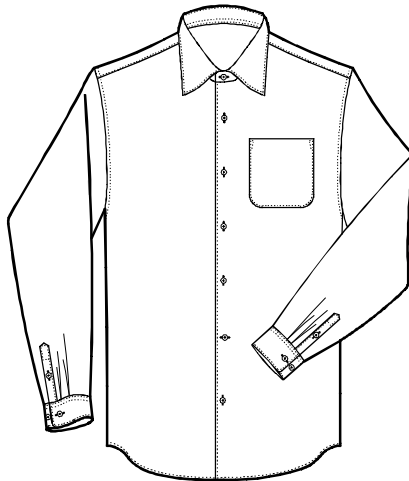
S-5600

▲ All vertical buttonholes



S-5601

Last buttonhole- horizontal



S-5602

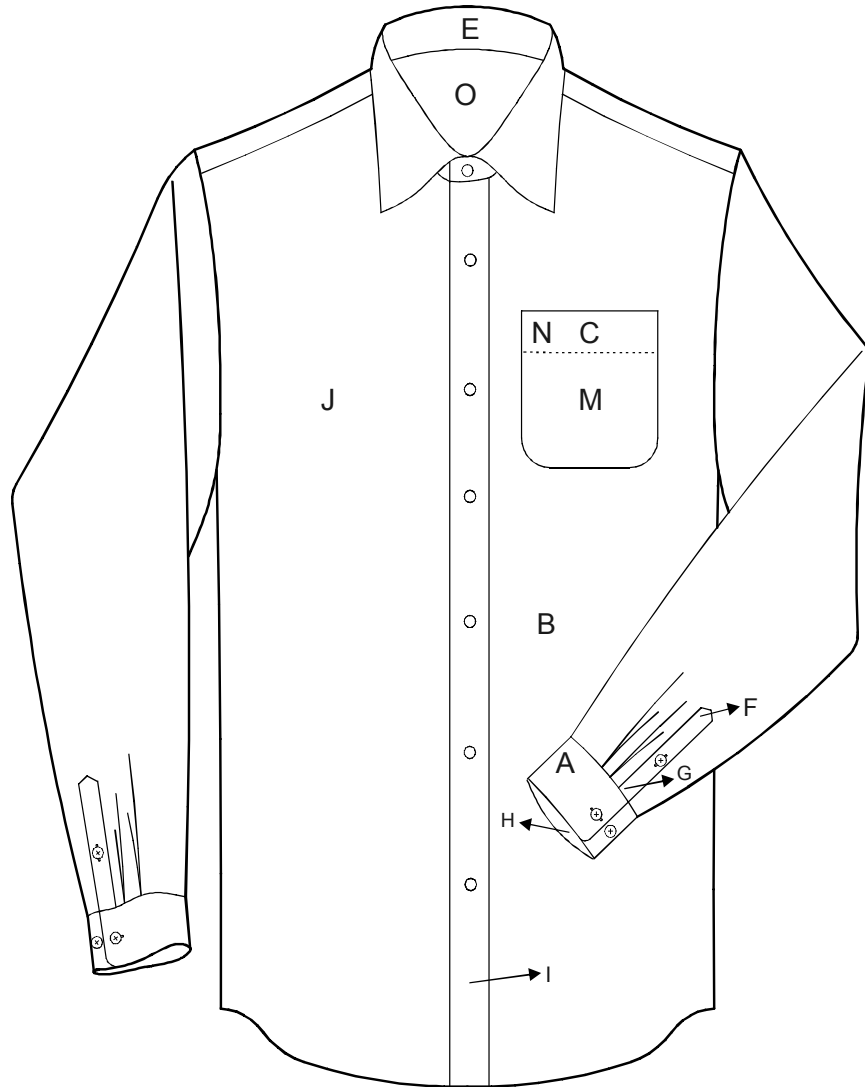
The second buttonhole
from bottom - Horizontal

★ Interlining type

Classic Collar interlining S-5700 ▲
Soft Collar interlining S-5701
Hard Collar interlining S-5702

Classic Cuff interlining S-5704 ▲
Soft Cuff interlining S-5705
Hard Cuff interlining S-5706

Monogram Position



- A Left cuff
- B Left waist
- C Pocket top center
- E Center of collar band
- F Left sleeve gusset
- G Left sleeve placket
- H Inside left cuff
- I Bottom of shirt
- J Right chest
- M Pocket center
- N Pocket top right
- O Inside yoke

CALLIGRAPHY: *ABCDEFGHIJKLMNOPQRSTUVWXYZ* RC01

TIMES ROMAN: **ABCDEFGHIJKLMNOPQRSTUVWXYZ** RC02

BLOCK: **ABCDEFGHIJKLMNOPQRSTUVWXYZ** RC03

SCRIPT: *ABCDEFGHIJKLMNOPQRSTUVWXYZ* RC04

BRADLEY: **ABCDEFGHIJKLMNOPQRSTUVWXYZ** RC05

BG LT BT: **ABCDEFGHIJKLMNOPQRSTUVWXYZ** RC06

BOOK SCRIPT: ***ABCDEFGHIJKLMNOPQRSTUVWXYZ*** RC07

OLD ENGLISH: **A B C D E F G H I J K L M N O P Q R S T U V W X Y Z** RC08

GRADL: **A B C D E F G H I J K L M N O P Q R S T U V W X Y Z** RC09

CALLIGRAPHY:	<i>abcdefghijklmnopqrstuvwxyz</i>	RC01
TIMES ROMAN:	abcdefghijklmnopqrstuvwxyz	RC02
BLOCK:	abcdefghijklmnopqrstuvwxyz	RC03
SCRIPT:	<i>abcdefghijklmnopqrstuwxysz</i>	RC04
BRADLEY:	ABCDEFGHIJKLMNopqrstuvwxyz	RC05
BG LT BT:	abcdefghijklmnopqrstuvwxyz	RC06
BOOK SCRIPT:	<i>abcdefghijklmnopqrstuvwxyz</i>	RC07
OLD ENGLISH:	abcdefghijklmnopqrstuvwxyz	RC08
GRADL:	abcdefghijklmnopqrstuvwxyz	RC09